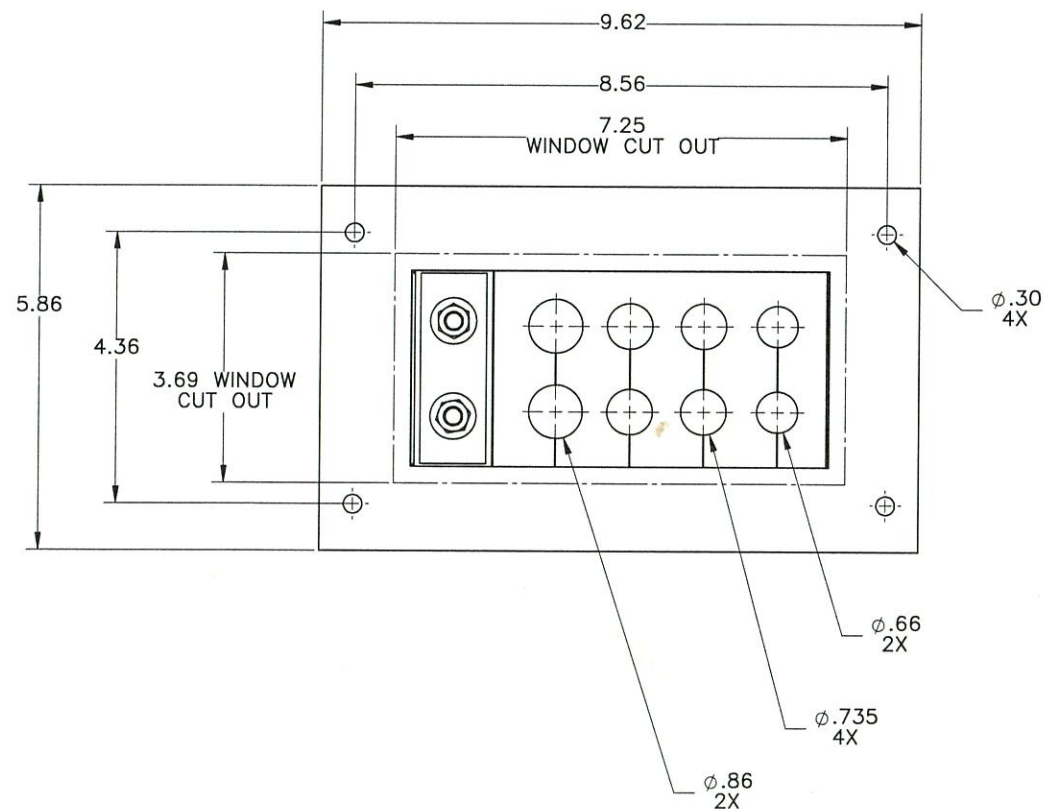
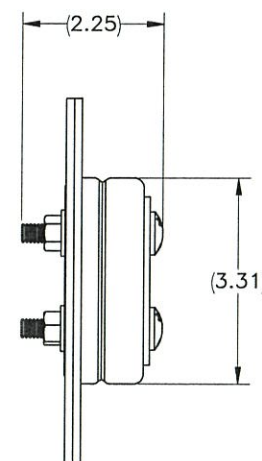
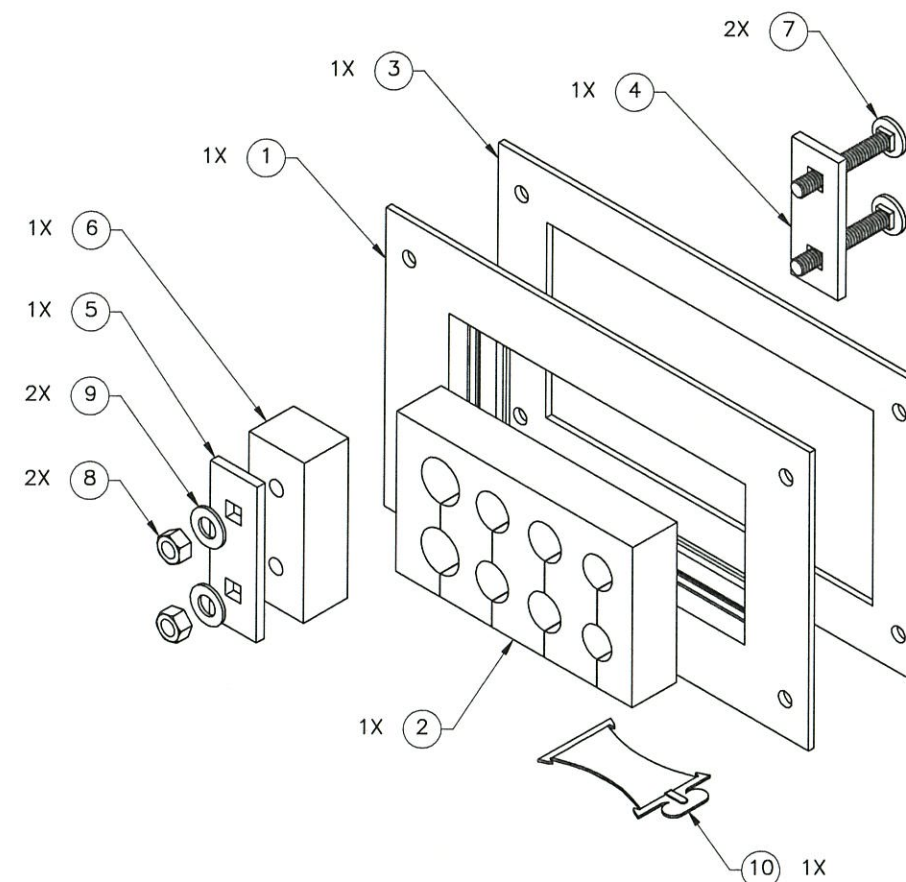
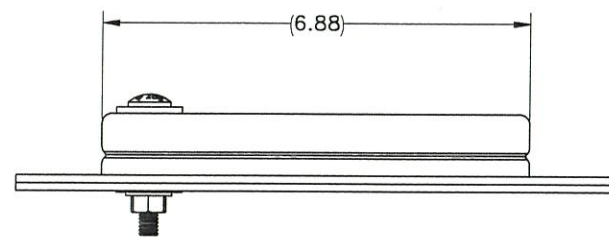




THE INFORMATION CONTAINED IN THIS DRAWING IS THE SOLE PROPERTY OF ELECTRO MECHANICAL INDUSTRIES, INC. ANY REPRODUCTION IN PART OR WHOLE WITHOUT THE WRITTEN PERMISSION OF ELECTRO MECHANICAL IND., IS PROHIBITED.

REVISIONS			
REV	DESCRIPTION	DATE	APPROVED



PARTS LIST					
ITEM NO.	QTY.	PART NUMBER	DESCRIPTION	LENGTH	WEIGHT
1	1	T01-0500	WINDOW ENTRY FRAME		0.62
2	1	P-001-095	WINDOW ENTRY MODULE		0.62
3	1	T01-0501	GASKET, WINDOW ENTRY		0.16
4	1	T01-0502	COMPRESSION PLATE, SMALL		0.13
5	1	T01-0503	COMPRESSION PLATE, LARGE		0.15
6	1	T01-0504	COMPRESSION MODULE, WINDOW ENTRY		0.18
7	2	COMMON	BOLT, CARRIAGE, .312-18UNC X 2.00 LG, GR307 A, ZINC PL		0.05
8	2	COMMON	NUT, HX, 5/16"-18UNC, ZINC PL		0.01
9	2	COMMON	WASHER, RUBBER BACKED, .312, ZINC PL		0.01
10	1	COMMON	LUBE PACKET		0.02

SURFACE FINISH <input checked="" type="checkbox"/> UNLESS OTHERWISE SPECIFIED	UNLESS OTHERWISE SPECIFIED DIMENSIONS ARE IN INCHES	APPROVALS	DATE	 ELECTRO MECHANICAL INDUSTRIES, INC. 11230 NEESHAW DRIVE HOUSTON, TEXAS 77065 1-800-453-0050
		DRAWN C. SANCHEZ CHECKED JSC ENGINEER/DESIGNER PRODUCTION L/PS	11.8.16 11.14.16 11.14.16	
MATERIAL: SEE PARTS LIST	TOLERANCES .00 ± .1 .00 ± .03 .000 ± .005 FRACTIONS ± 1/16 ANGLES ± .25	THIRD ANGLE PROJECTION 	ALL HOLES: LESS THAN 1.00 +.012 - .003 1.00 AND OVER +.031 - .012 FRACTIONS ± 1/32	SIZE DRAWING NO. <b>D 1017-0010-0002</b>
IF IN DOUBT...ASK!				SCALE: 1:1.5   WEIGHT: 2.00 lbs.   SHEET 1 OF 1