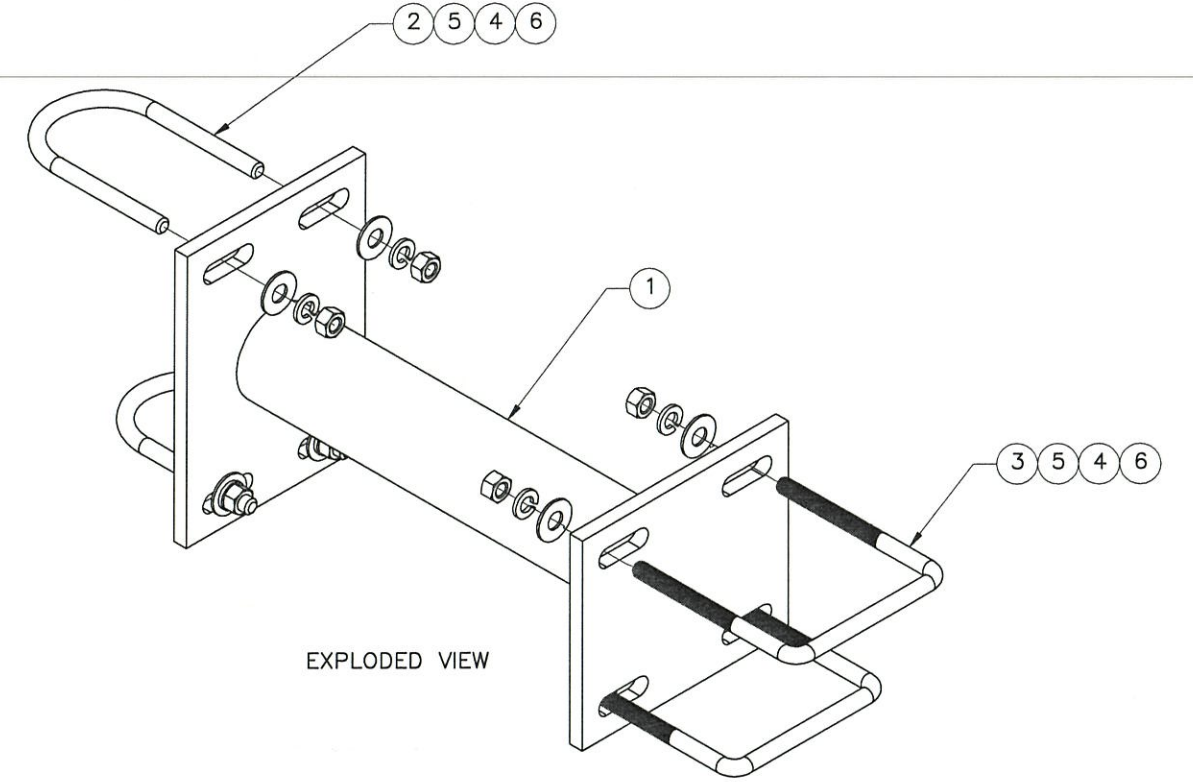
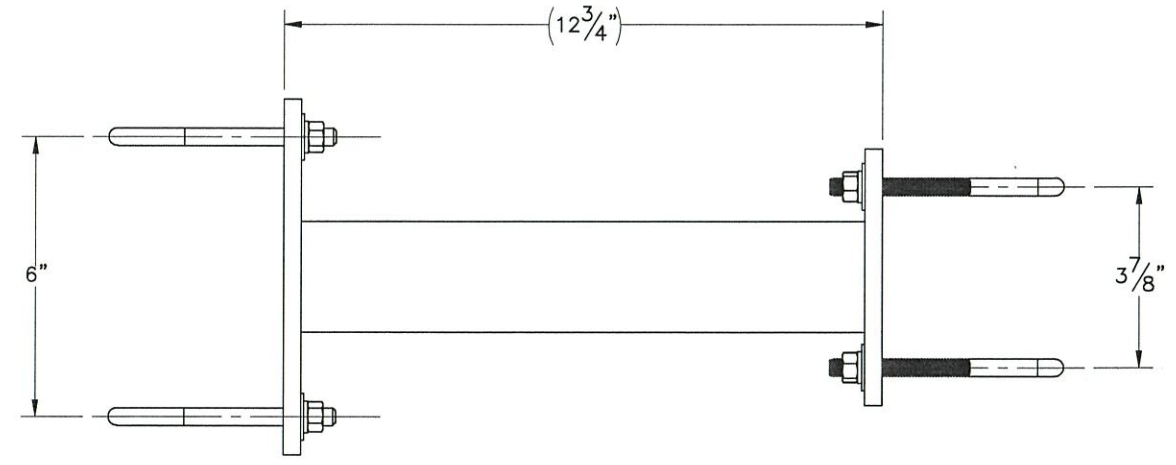
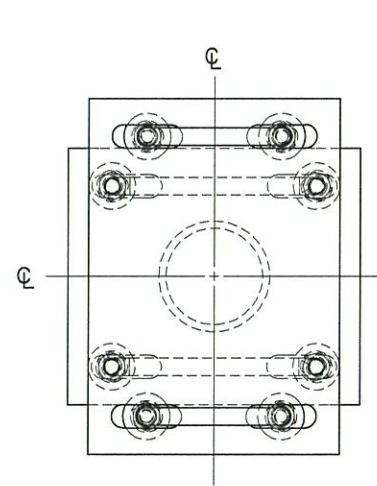



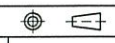
THE INFORMATION CONTAINED IN THIS DRAWING IS THE SOLE PROPERTY OF ELECTRO MECHANICAL INDUSTRIES, INC. ANY REPRODUCTION IN PART OR WHOLE WITHOUT THE WRITTEN PERMISSION OF ELECTRO MECHANICAL IND., IS PROHIBITED.



EXPLODED VIEW

- NOTES:
UNLESS OTHERWISE SPECIFIED,
1. ALL WELDING PER AWS D1.1, FCAW, E7XT-1 AND GMAW, ER70S-6 ELECTRODES.
 2. SQUARENESS OF WELDED COMPONENTS TO BE WITHIN +/- 1/16".
 3. ALL WELDS 3/16" FILLET OR SEAM WELDS ALL AROUND AS APPLICABLE PER JOINT.
 4. ALL CAPTIVE TUBES MUST HAVE MIN. TWO WEEP HOLES (ONE UPPER, ONE LOWER) 7/16" DIA.
 5. GALVANIZE PER ASTM A123.

ITEM NO.	QTY REQD	PART NUMBER	DESCRIPTION	LENGTH	WEIGHT
1	1	W-000-280	MID-MAST LIGHT MOUNT		7.5
2	2	002-0UG-0000	U-BOLT, .375-16 X 4.5 LG, 2" PIPE, GALV		0.34
3	2	COMMON	U-BOLT, SQUARE, 4" WIDE, 4-5/8" L INSIDE, GALV.		
4	8	002-0LW-G005	WASHER, SPLIT LOCK, .375 INCH, GALV		0.01
5	8	COMMON	FLAT WASHER, 3/8", GALV.		
6	8	002-0NG-0012	NUT, HEX, .375-16UNC, GR 5, GALV		0.02

SURFACE FINISH <input checked="" type="checkbox"/> UNLESS OTHERWISE SPECIFIED		UNLESS OTHERWISE SPECIFIED DIMENSIONS ARE IN INCHES		APPROVALS	DATE	 ELECTRO MECHANICAL INDUSTRIES, INC. 11230 NEESHAW DRIVE HOUSTON, TEXAS 77065 1-800-453-0050
MATERIAL	SEE PARTS LIST	TOLERANCES		DRAWN	7.13.16	
THIRD ANGLE PROJECTION		.0 ±.06 .00 ±.01 .000 ±.005		CHECKED	8.5.16	MID-MAST LIGHT MOUNT ASSEMBLY SIZE B DRAWING NO. 1015-0000-0024 REV - SCALE: 1:4 WEIGHT: 9.2 lbs. SHEET 1 OF 1
NEXT ASSY	USED ON	FRACTIONS ± 1/16 ANGLES ± .25° HOLES: DRILLED OR PUNCHED +1/32 BURNED ± 1/32		ENGINEER/DESIGNER	8.8.16	
APPLICATIONS				PRODUCTION	8-9-16	