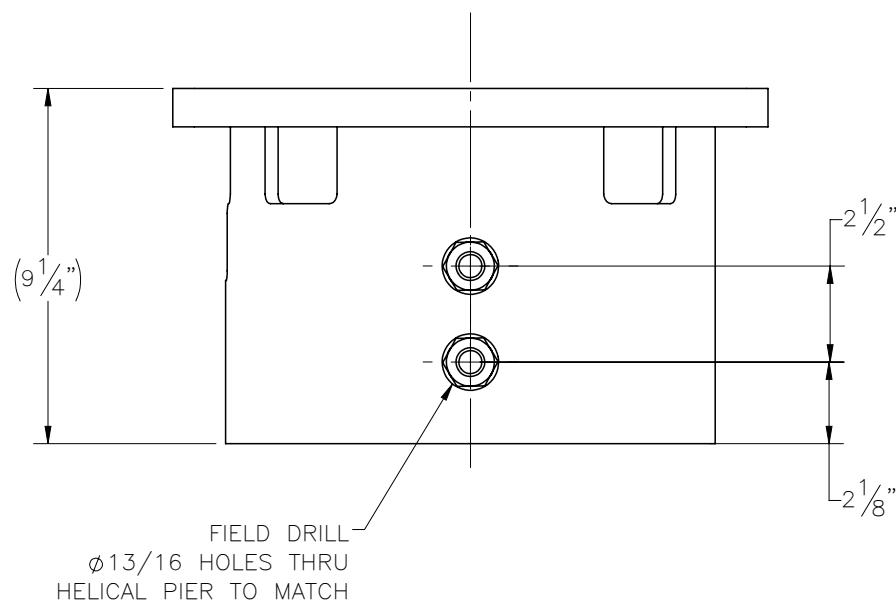
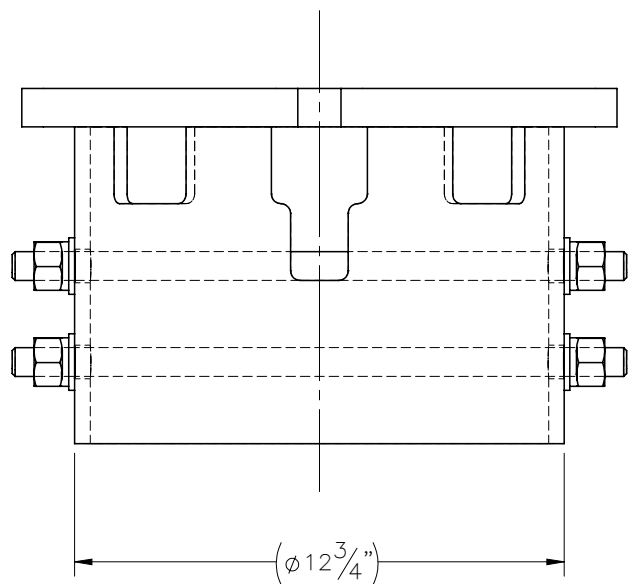
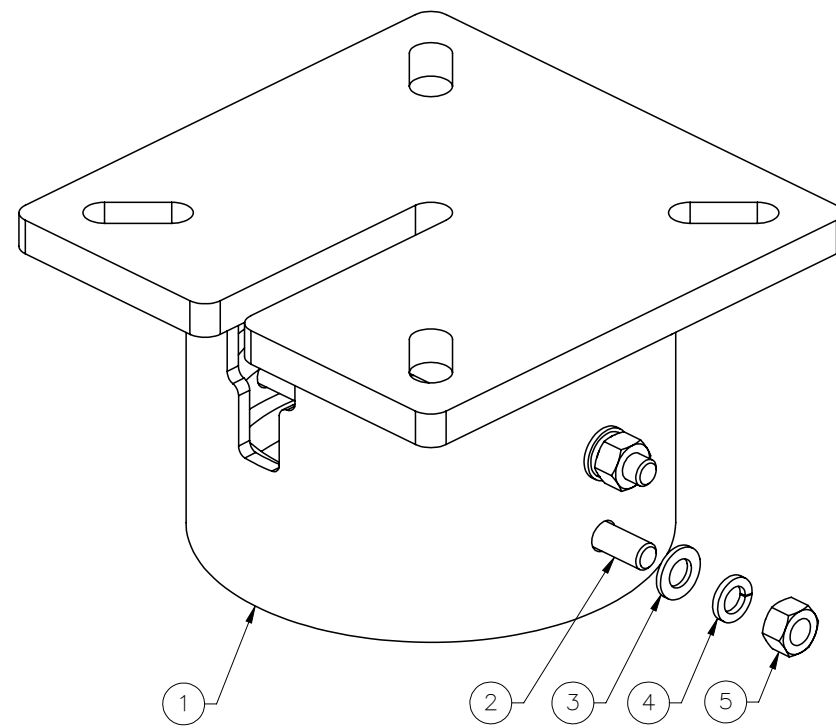
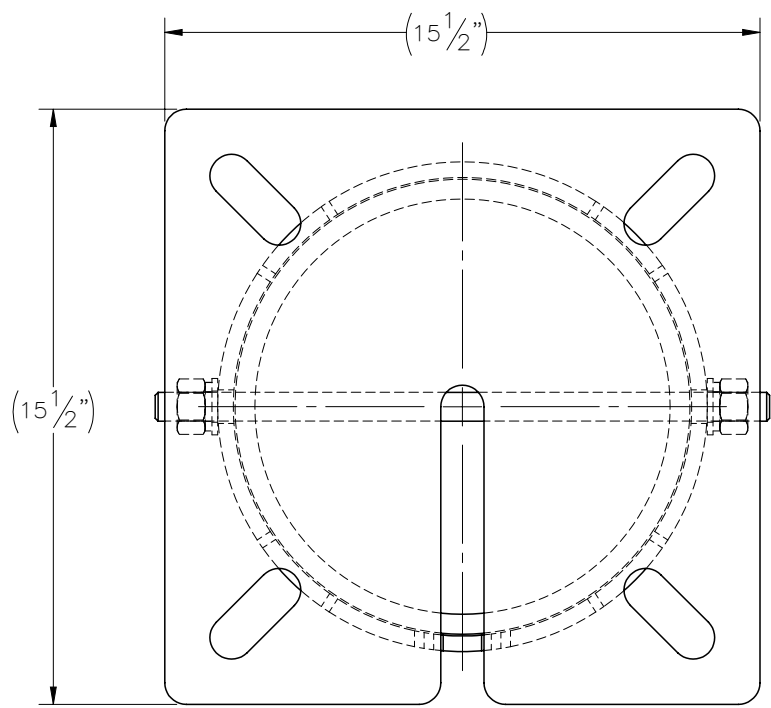

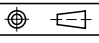


THE INFORMATION CONTAINED IN THIS DRAWING IS THE SOLE PROPERTY OF ELECTRO MECHANICAL INDUSTRIES, INC. ANY REPRODUCTION IN PART OR WHOLE WITHOUT THE WRITTEN PERMISSION OF ELECTRO MECHANICAL IND., IS PROHIBITED.



ITEM NO.	QTY REQD	PART NUMBER	DESCRIPTION	LENGTH	WEIGHT
1	1	W-002-765	HELICAL CAP WELDMENT, 10"		105.7
2	2	002-OAT-H054	AT, .750-10 X 16.0, GALV, GR B7	16"	2.01
3	4	002-OFW-G003	WASHER, FLAT, .750, GALV, F436		0.05
4	4	002-OLW-G003	WASHER, SPLIT LOCK, .750, GALV		0.04
5	4	002-ONG-0002	NUT, HEX, .750-10, GALV, GR 2H		0.189

SURFACE FINISH <input checked="" type="checkbox"/> UNLESS OTHERWISE SPECIFIED		UNLESS OTHERWISE SPECIFIED DIMENSIONS ARE IN INCHES		APPROVALS		DATE		 ELECTRO MECHANICAL INDUSTRIES, INC. 11230 NEESEHAW DRIVE HOUSTON, TEXAS 77065 1-800-453-0050	
MATERIAL SEE PARTS LIST		TOLERANCES		DRAWN H. MAUERMANN		11/30/2023			
THIRD ANGLE PROJECTION 		.0 ±.06 .00 ±.015 .000 ±.005		CHECKER C. SANCHEZ		11/30/2023		TITLE: HELICAL CAP, FOR 10" HELICAL	
NEXT ASSY		FRACTIONS ± 1/16 ANGLES ± .25°		ENGINEER J. Breen		12/5/2023			
USED ON		HOLES: DRILLED OR PUNCHED ± 1/32		PRODUCTION J. KERNER		12/5/2023		SIZE B DRAWING NO. 1007-0000-0046 REV 0	
APPLICATIONS		BURNED ± 1/32						SCALE: 1:5 WEIGHT: 110.9 lbs. SHEET 1 OF 1	

NOTE:
 USING THIS ITEM TO REWORK AN INSTALLED HELICAL THAT HAS BEEN CUT OFF DUE TO SHALLOW PENETRATION REQUIRES ADDITIONAL ENGINEERING REVIEW OF THE SITE INSTALLATION AND SOIL CONDITIONS.