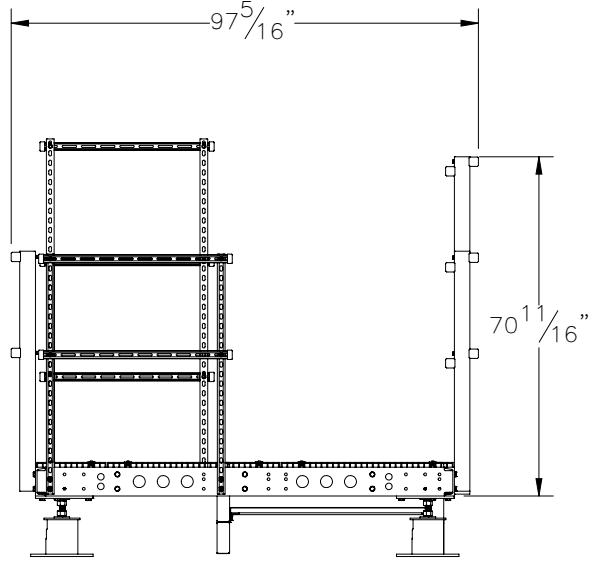
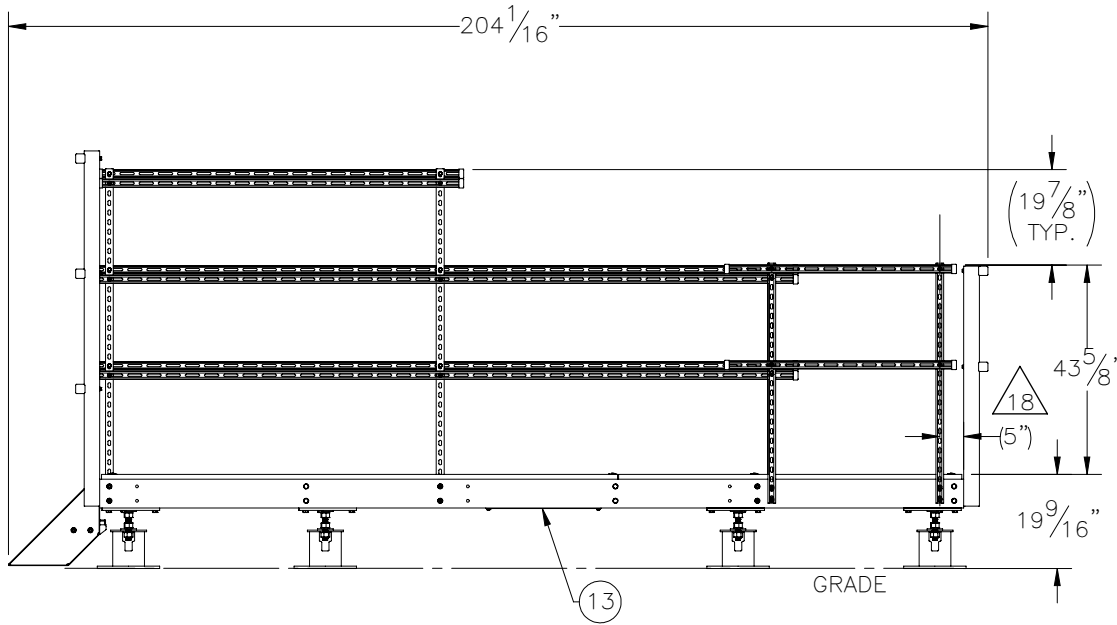
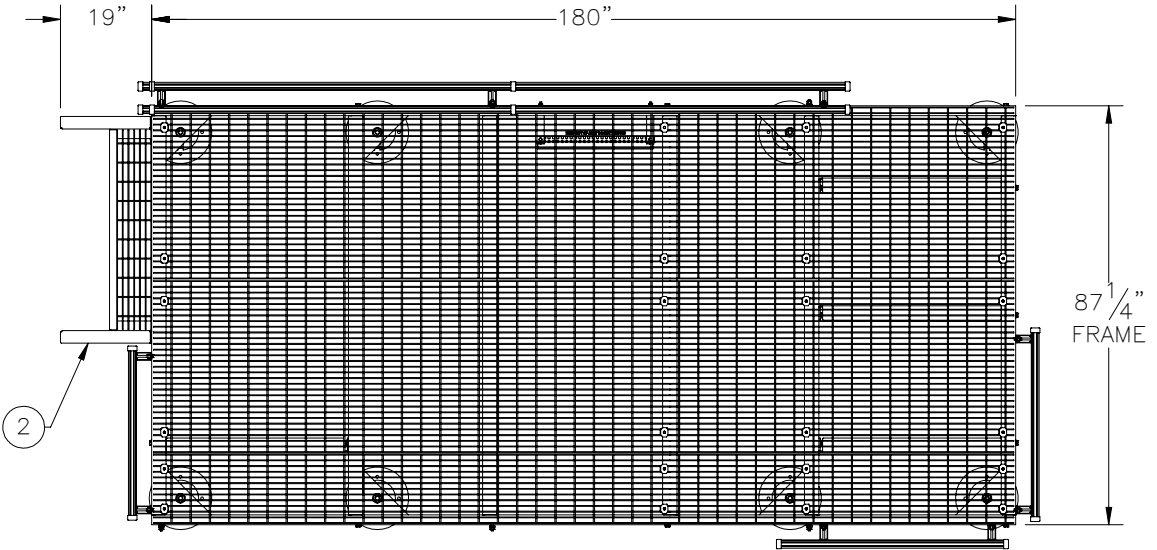


THE INFORMATION CONTAINED IN THIS DRAWING IS THE SOLE PROPERTY OF ELECTRO MECHANICAL INDUSTRIES, INC. ANY REPRODUCTION IN PART OR WHOLE WITHOUT THE WRITTEN PERMISSION OF ELECTRO MECHANICAL IND., IS PROHIBITED.

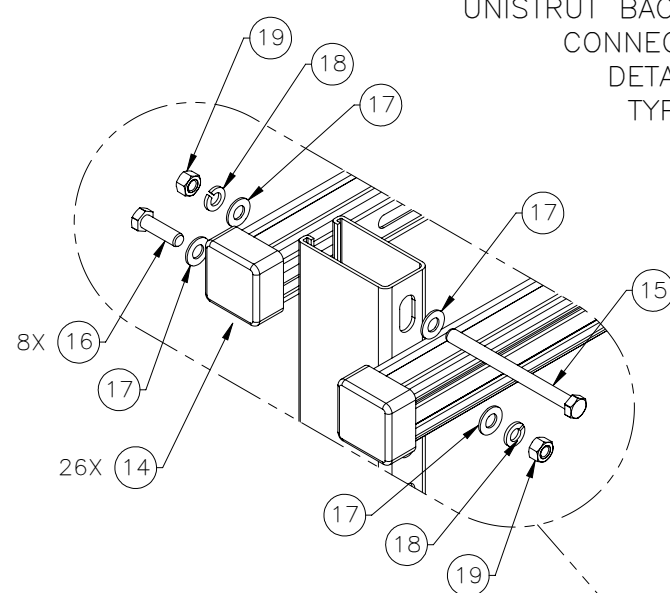
REVISIONS					
REV.	DCN #	DESCRIPTION	DATE	BY	APPROVED
18	01182	VIRTUAL UNISTRUT CONVERTED TO INDIVIDUAL PARTS, NO'S., SHIFTED VERT RAILS TO USE 2.5" HOLE SPACING, HW ADDED	09/12/2022	JTR	JPB



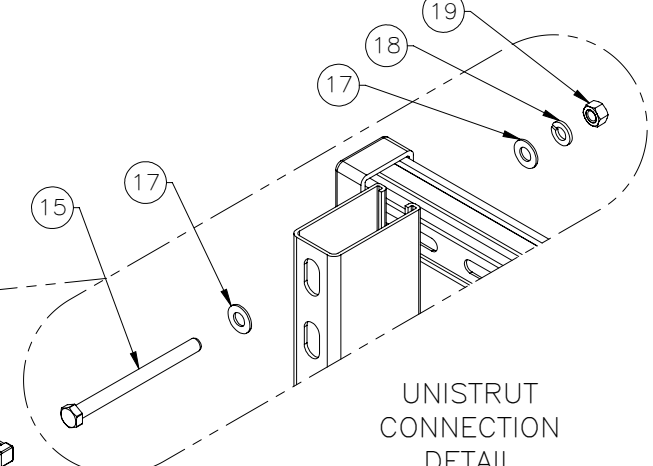
ITEM NO.	QTY REQD	PART NUMBER	DESCRIPTION	LENGTH	WEIGHT
1	1	1001-0020-0056	EMERSON BOLT TOGETHER PLATFORM 87" X 180"		1600.8
2	1	1003-0020-0002	1 TREAD STAIR ASS'Y (42" WIDE)		55.4
3	5	P-006-282	VERT. HANDRAIL, UNISTRUT	50"	12.2
4	3	P-006-283	SHORT SIDE MOUNTING RAIL, UNISTRUT	36"	4.1
5	2	P-006-294	SHORT SIDE MOUNTING RAIL, UNISTRUT	48"	5.5
6	2	P-006-285	SHORT SIDE HANDRAIL, UNISTRUT	40"	4.6
7	4	P-006-344	LONG SIDE MOUNTING RAIL, UNISTRUT	148"	16.9
8	2	P-006-345	VERT. MOUNTING RAIL, UNISTRUT	70 1/4"	17.1
9	2	P-006-346	LONG SIDE HANDRAIL, UNISTRUT	76"	8.7
10	2	P-006-281	VERT. MOUNTING RAIL, UNISTRUT	74"	18.0
11	8	A-000-250	CORNER FOOT MOUNT ASSY, 2 LEVELING WASHERS		14.1
12	8	1008-0010-0015	8" FOOT AND HARDWARE ASSY., 1" HARDWARE		35.1
13	1	1000-0000-0075	GROUND BAR KIT		8.83
14	26	309-000-0008	STRUT CHANNEL CAP 1.625" X 1.625"		0.05
15	22	002-0BG-0258	HB, .375-16 X 4.50 LG., PT X 1.00, GR. 5, HDG	4.50	0.159
16	8	002-0BG-0013	HB, .375-16 X 1.25 LG., PT X 1.00, GR. 5, HDG	1.25	0.06
17	60	002-0FW-G005	WASHER, FLAT, .375, GALV		0.01
18	30	002-0LW-G005	WASHER, SPLIT LOCK, .375 INCH, GALV.		0.01
19	30	002-0NG-0018	NUT, HEX, .375-16UNC, GR 5, GALV		0.02
20	14	002-0BG-0010	HHB, .500-13 X 1.50 LG., PT X 1.00, A325, HDG	1.50	0.14
21	34	002-0FW-G002	FW, .50, F436, HDG		0.02
22	14	002-0LW-G002	WASHER, SPLIT LOCK, .500", GALV		0.01
23	14	002-0NG-0010	NUT, HEX, .500-13UNC, GR 2H, GALV		0.06

SURFACE FINISH <input checked="" type="checkbox"/> UNLESS OTHERWISE SPECIFIED		UNLESS OTHERWISE SPECIFIED DIMENSIONS ARE IN INCHES		APPROVALS		DATE		EM I ELECTRO MECHANICAL INDUSTRIES, INC. 11230 NEESESHAW DRIVE HOUSTON, TEXAS 77065 1-800-453-0050	
MATERIAL SEE PARTS LIST		TOLERANCES		DRAWN J. CRITELLI		12/18/2018			
THIRD ANGLE PROJECTION		.0 ±.06 .00 ±.015 .000 ±.005		CHECKER J. BREEN		12/21/2018		TITLE: 87" X 180" BOLT TOGETHER PLATFORM GRAVITY MOUNTED	
NEXT ASSY USED ON		FRACTIONS ± 1/16 ANGLES ± .25°		ENGINEER J. BREEN		12/21/2018			
APPLICATIONS		HOLES: DRILLED OR PUNCHED ± 1/32 BURNED ± 1/32		PRODUCTION J. SUNDERLAND		12/26/2018		SIZE B DRAWING NO. 1000-0010-0128 REV 18 SCALE: 1:40 WEIGHT: 2317.90 lbs. SHEET 1 OF 3	

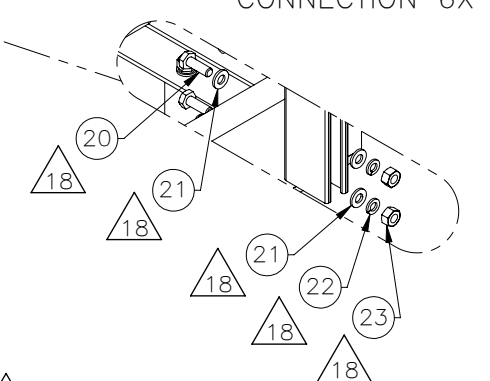
UNISTRUT BACK TO BACK
CONNECTION
DETAIL
TYP



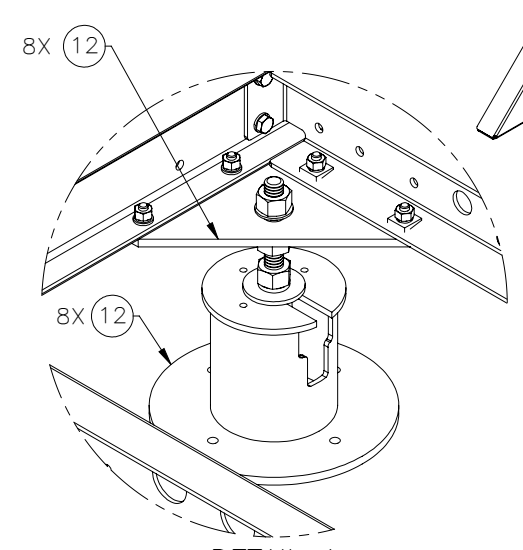
UNISTRUT
CONNECTION
DETAIL
TYP



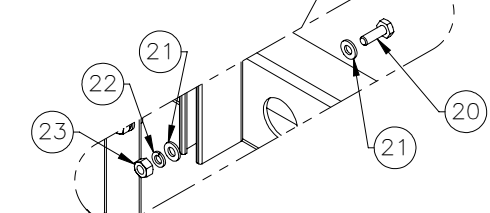
UNISTRUT TO FRAME
CONNECTION 6X



CONNECTS USING
SUBASSY HARDWARE 2



FRONT (STAIR SIDE) AND REAR
UNISTRUT CONNECTION DETAIL 8X



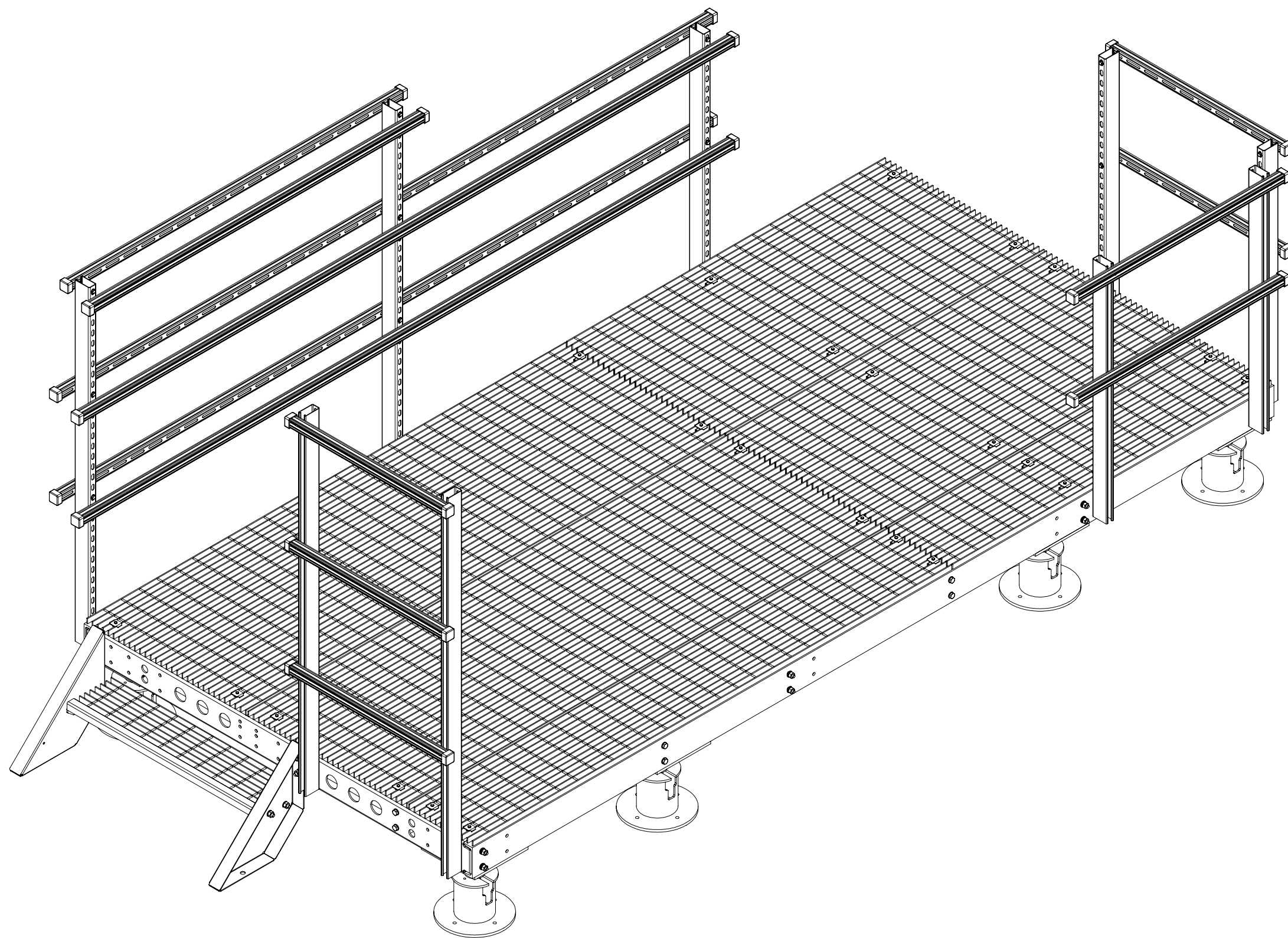
21 2X ADDITIONAL WASHERS
ADDED TO SUBASSY

CONNECTS USING
SUBASSY HARDWARE

21 2X ADDITIONAL WASHERS
ADDED TO SUBASSY

21 2X ADDITIONAL WASHERS
ADDED TO SUBASSY

		ELECTRO MECHANICAL INDUSTRIES, INC. 11230 NEESHAW DRIVE HOUSTON, TEXAS 77065 1-800-453-0050	
SIZE	DRAWING NO.	REV.	
B	1000-0010-0128	18	
SCALE: 1:20			SHEET 2 OF 3



		ELECTRO MECHANICAL INDUSTRIES, INC. 11230 NEESHAW DRIVE HOUSTON, TEXAS 77065 1-800-453-0050	
SIZE	DRAWING NO.	REV.	
B	1000-0010-0128	18	
SCALE: 1:18			SHEET 3 OF 3