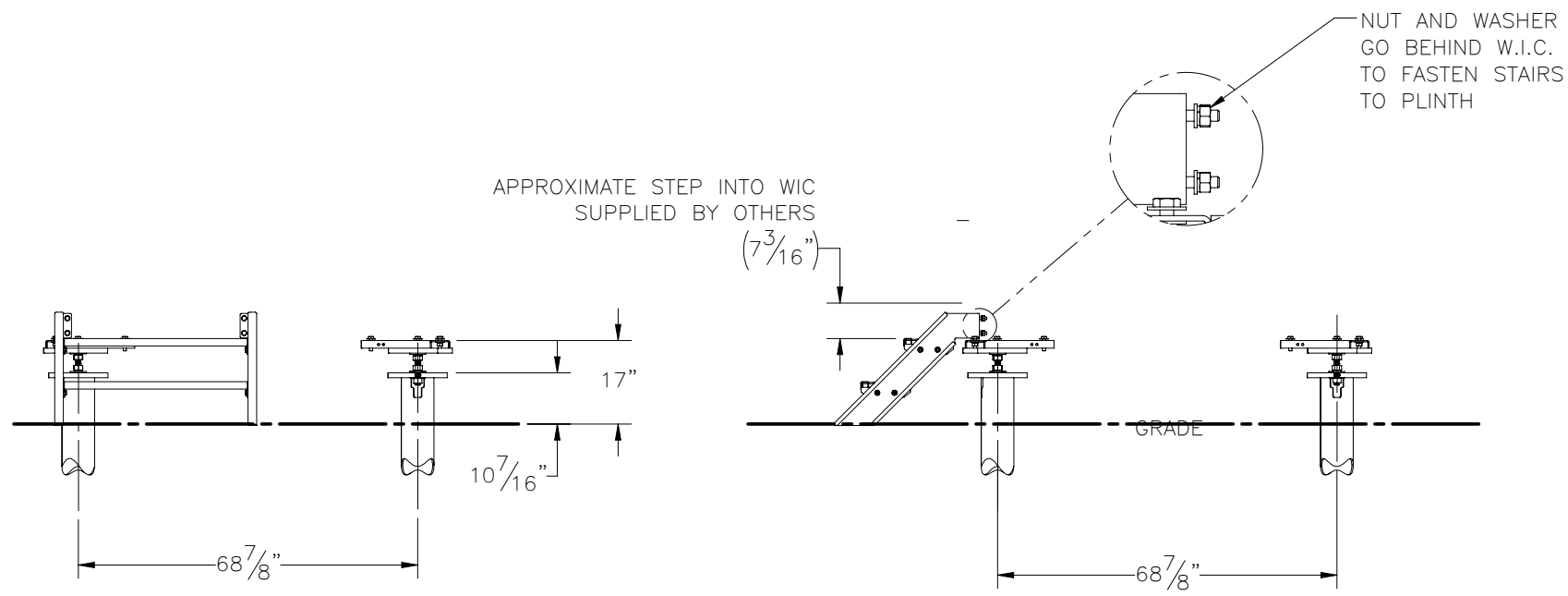
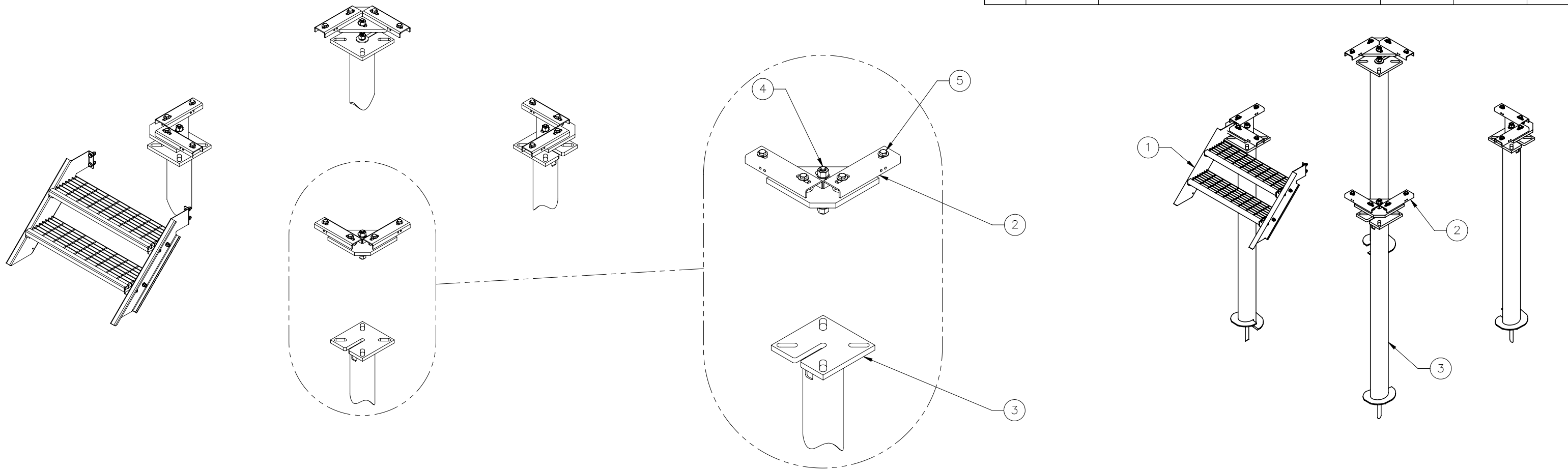

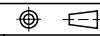


THE INFORMATION CONTAINED IN THIS DRAWING IS THE SOLE PROPERTY OF ELECTRO MECHANICAL INDUSTRIES, INC. ANY REPRODUCTION IN PART OR WHOLE WITHOUT THE WRITTEN PERMISSION OF ELECTRO MECHANICAL IND., IS PROHIBITED.

REVISIONS					
REV.	DCN #	DESCRIPTION	DATE	BY	APPROVED
7	01053	KITTED WIC ATTACHING HARDWARE	6/17/2021	JPB	FJM



ITEM NO.	QTY.	PART NUMBER	DESCRIPTION	WEIGHT
1	1	1003-0000-0016	2-STEP STAIRS KIT, 45 DEGREE	81.9
2	4	W-000-771	ATT WIC HELICAL ADAPTER WELDMENT	43.43
3	4	1008-0050-0015	6\"/>	

SURFACE FINISH <input checked="" type="checkbox"/> UNLESS OTHERWISE SPECIFIED		UNLESS OTHERWISE SPECIFIED DIMENSIONS ARE IN INCHES		APPROVALS		DATE		 ELECTRO MECHANICAL INDUSTRIES, INC. 11230 NEESESHAW DRIVE HOUSTON, TEXAS 77065 1-800-453-0050	
MATERIAL SEE PARTS LIST		TOLERANCES		DRAWN RLWjr		1/29/2018			
THIRD ANGLE PROJECTION 		.0 ±.06 .000 ±.015 .000 ±.005		CHECKER C. SANCHEZ		4/9/2018		TITLE: HELICAL MOUNTED WIC ASSEMBLY	
NEXT ASSY USED ON		FRACTIONS ± 1/16 ANGLES ± .25°		ENGINEER J. BUSHMAN		4/9/2018			
APPLICATIONS		HOLES: DRILLED OR PUNCHED +1/32 BURNED ±1/32		PRODUCTION J. SUNDERLAND		4/9/2018			
SCALE: 1:36		WEIGHT: 993.7 lbs.		SHEET 1 OF 1		SIZE B DRAWING NO. 1000-0000-0101 REV 7			